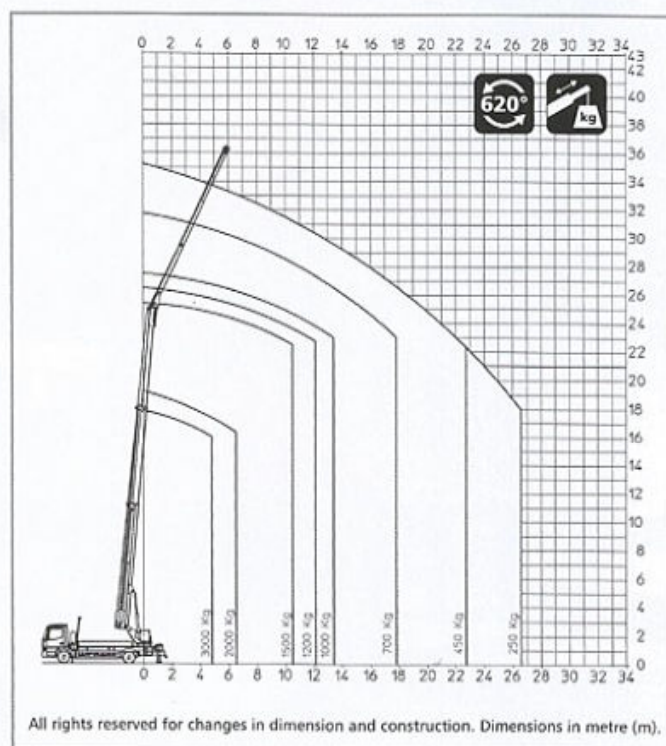


# Aluminium Truck Crane AK 35/3000 PLC



## Duty chart



## Technical specifications

Payload max. [kg]	3.000
Extension length max. [m]	34.40
Main boom length max. [m]	24.40
Jib extendible [m]	5.20 to 11.20
Main boom angle approx. [degrees]	85
Jib angle approx. [degrees]	160
Lifting speed approx. [m/min]	65
Support area L x W / (to one side) [m]	5.40 x 5.55 / fully variable
Vehicle dimensions L x W x H [m]	9.70 x 2.55 x 3.95
Wheelbase min. [mm]	4,220
Gross vehicle weight [t]	7.49
Working height platform operation [m]	35.00
Lateral range with access platform [m]	21.80 at 250 kg 26.20 at 100 kg

All rights reserved for changes in dimension and construction.